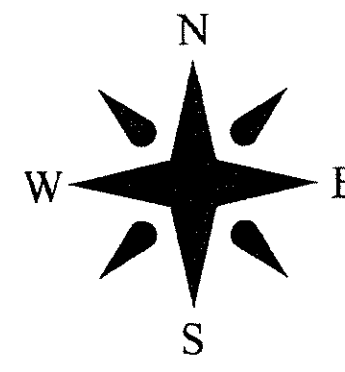


# ISLA VERDE OF WELLINGTON RESIDENTIAL REPLAT NO. 1

BEING A REPLAT OF ISLA VERDE OF WELLINGTON RESIDENTIAL REPLAT, ACCORDING TO THE PLAT THEREOF, AS RECORDED IN PLAT BOOK 115, PAGES 69 THROUGH 73, PUBLIC RECORDS OF PALM BEACH COUNTY, FLORIDA, LYING IN SECTIONS 6 AND 7, TOWNSHIP 44 SOUTH, RANGE 42 EAST, VILLAGE OF WELLINGTON, PALM BEACH COUNTY, FLORIDA

AUGUST 2015

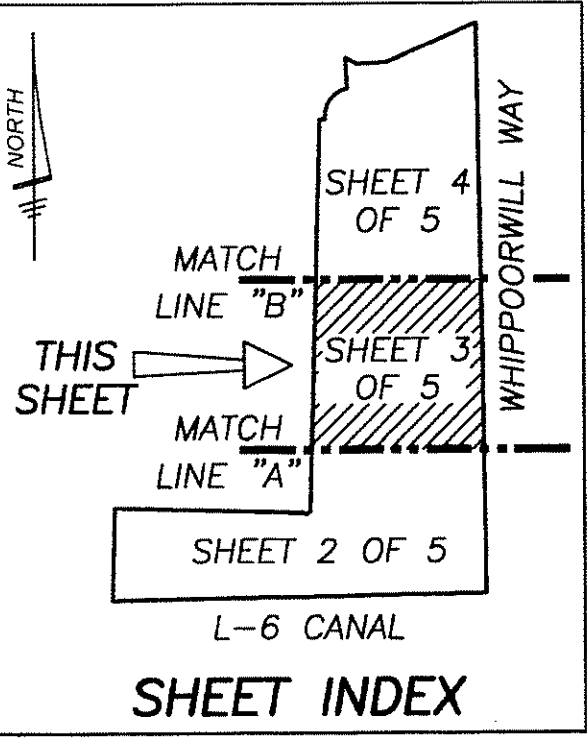
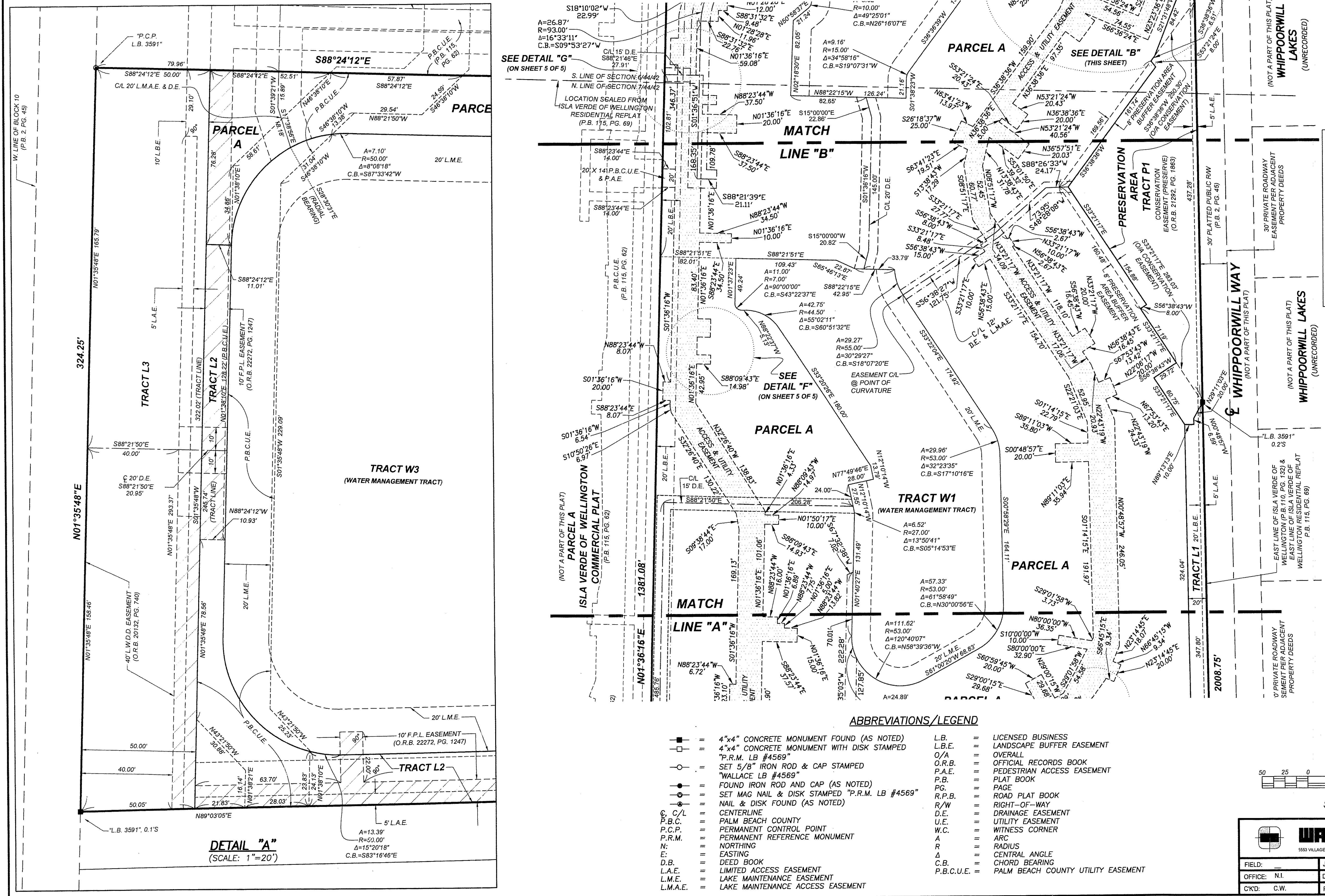


12

STATE OF FLORIDA  
COUNTY OF PALM BEACH  
THIS PLAT WAS FILED FOR  
RECORD AT \_\_\_\_\_ M.  
THIS \_\_\_\_\_ DAY OF  
A.D. 20\_\_\_\_ AND DULY RECORDED  
IN PLAT BOOK \_\_\_\_\_ ON  
PAGES \_\_\_\_\_ AND \_\_\_\_\_  
SHARON R. BOCK  
CLERK AND COMPTROLLER

BY: \_\_\_\_\_  
DEPUTY CLERK

SHEET 3 OF 5



W. LINE OF BLOCK 10  
(P.B. 2, PG. 45)

324.25'  
N01°35'48"E

40' L.W.D. EASEMENT  
(O.R.B. 20132, PG. 740)

"L.B. 3591", 0.1'S

**DETAIL "A"**  
(SCALE: 1"=20')

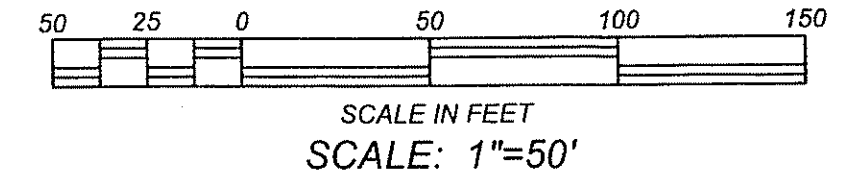
A=13.39'  
R=50.00'  
Δ=15°20'18"  
C.B.=S83°16'46"E

SEE DETAIL "G"  
(ON SHEET 5 OF 5)

SEE DETAIL "F"  
(ON SHEET 5 OF 5)

**ABBREVIATIONS/LEGEND**

- = 4"x4" CONCRETE MONUMENT FOUND (AS NOTED)
- = 4"x4" CONCRETE MONUMENT WITH DISK STAMPED
- = SET 5/8" IRON ROD & CAP STAMPED
- = "WALLACE LB #4569"
- = FOUND IRON ROD AND CAP (AS NOTED)
- = SET MAG NAIL & DISK STAMPED "P.R.M. LB #4569"
- = NAIL & DISK FOUND (AS NOTED)
- C/L = CENTERLINE
- P.B.C. = PALM BEACH COUNTY
- P.C.P. = PERMANENT CONTROL POINT
- P.R.M. = PERMANENT REFERENCE MONUMENT
- N = NORTHING
- E = EASTING
- D.B. = DEED BOOK
- L.A.E. = LIMITED ACCESS EASEMENT
- L.M.E. = LAKE MAINTENANCE EASEMENT
- L.M.A.E. = LAKE MAINTENANCE ACCESS EASEMENT
- L.B. = LICENSED BUSINESS
- L.B.E. = LANDSCAPE BUFFER EASEMENT
- O/A = OVERALL
- O.R.B. = OFFICIAL RECORDS BOOK
- P.A.E. = PEDESTRIAN ACCESS EASEMENT
- P.B. = PLAT BOOK
- P.G. = PAGE
- R.P.B. = ROAD PLAT BOOK
- R/W = RIGHT-OF-WAY
- D.E. = DRAINAGE EASEMENT
- U.E. = UTILITY EASEMENT
- W.C. = WITNESS CORNER
- A = ARC
- R = RADIUS
- Δ = CENTRAL ANGLE
- C.B. = CHORD BEARING
- P.B.C.U.E. = PALM BEACH COUNTY UTILITY EASEMENT



**WALLACE SURVIVING**  
CORP., LICENSED BUSINESS # 4399  
5553 VILLAGE BOULEVARD, WEST PALM BEACH, FLORIDA 33407 • (561) 640-4551

FIELD: _____	JOB NO.: 13-1322-11	F.B. WP106 PG. 19
OFFICE: N.I.	DATE: 10/20/2014	DWG. NO. 13-1322-11
CKD: C.W.	REF: 13-1322-DWG	SHEET 3 OF 5